



**AV490**  
SKID STEER LOADER



**JOYSTICK DRIVE**

**TOUGH | AGILE | FUEL SAVER**





## TOUCH SCREEN DISPLAY

TFT touch screen for easy use with oily hands. **Day/Night Mode** and **Auto brightness** for enhance visibility with integrated camera display.



## FOOT OPERATED ACCELERATOR FOR SAVING FUEL

## LOADED WITH FEATURES

### Run all day EFFICIENT PERFORMANCE



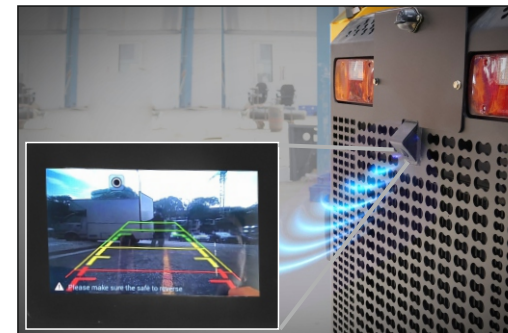
Efficient **KUBOTA** engine cooling with direct-mounted fan and cooler reduces fuel consumption.

### Optional AIR CONDITIONED CABIN



All day comfort for **productive performance**.

### REAR CAMERA



**Rear view camera** gives better visibility, **reduces blind spots** for safe operations.

### LED LIGHT & MUSIC PLAYER



Enhance your work with an **LED light** and **Music player**, simplifying your tasks.



## THE BEST ALL ROUNDER

### Interchangeable attachments



• **CONCRETE MIXER ATTACHMENT**



• **FORKLIFT ATTACHMENT**



• **SWEEPER ATTACHMENT**

## SPECIFICATION

### Machine Rating

Rated Operating Capacity	Kg	655
Tipping Load	Kg	1310
Pump Capacity	Lpm	56.7
System Relief Pressure	Mpa	23.00
Max Travel Speed	Km/Hr	14.0

### Engine

Model		KUBOTA
Fuel Type		Diesel
Cooling		Liquid
Max.Power@ 2700 rpm	Nm	36.5kW(49.5 HP)
Max.Torque @ 1600 rpm	No	158.6
No.of.Cylinders		4

### Weights

Operating Weight	Kg	2700
------------------	----	------

### Electrical

Battery	V	12
Alternator	Amps	90

### Capacity

Fuel	L	48
Engine Oil	L	9.5
Coolant	L	7.2
Hydraulic System	L	65
LH Chain Case	L	10
RH Chain Case	L	10

### Drive

System Transmission	Hydrostatic drive with hydraulic variable displacement pump with heavy duty r bidirectional motor.
---------------------	--

Type Of Drive	4WD - Chain Drive
---------------	-------------------

### Control

Vehicle Steering	Skid steering, Controlled by a left hand side Single Joystick.
------------------	--

Loader Hydraulic Tilt And Lift	Single Joystick on right hand side.
--------------------------------	-------------------------------------

Front Auxiliary (std)	Electrical switch on right hand side Joystick.
-----------------------	--

### Tyre

10X16.5-10 PR Heavy/Medium Duty, Solid Tyre

### Attachments

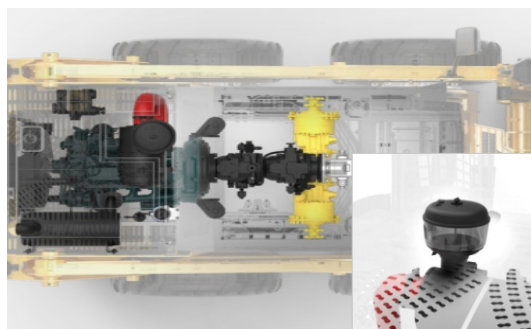
Backhoe, Sweeper, Pallet Fork, Concrete mixer etc.,

### Optional

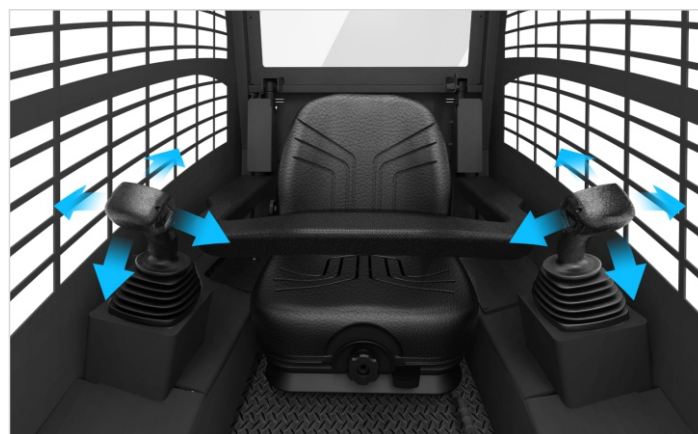
Self Levelling Valve, Anti stalling feature, AC Cabin, Aux. Hydraulics High Flow.

## Effortless Maintenance

### EASY SERVICEABILITY



Engine directly coupled to pump via a reliable flexible coupling ensures maintenance-free and trouble-free operation. Pre-cleaner included for dusty environments.



## SUSPENSION SEAT

Standard feature for better comfort.

## OPERATOR SAFETY LOCK

**Safety bar:** Triggers parking brake and disable hydraulic automatically.

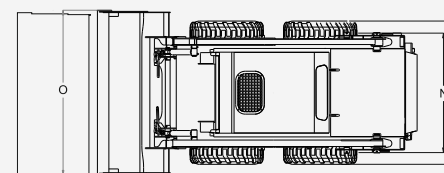
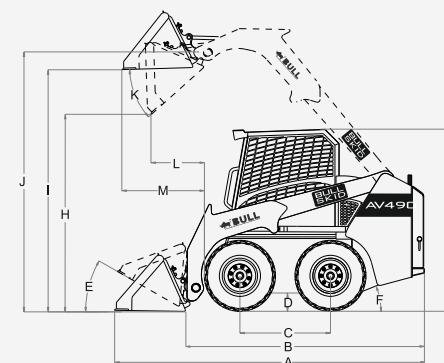


## JOYSTICK DRIVE

Effortless operation with better control.



## DIMENSION

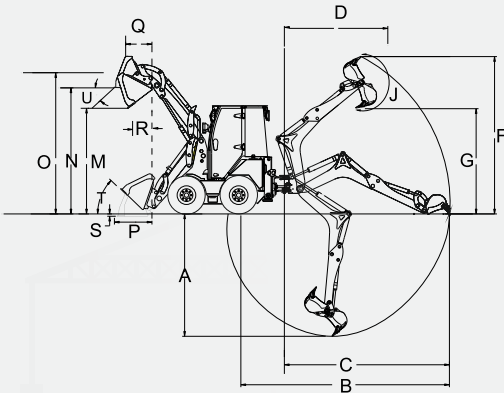


Dimensions		mm	ft-in
A	Over All Length	3282 mm	10'-9.2"
B	Length Without Attachment	2511 mm	8'-2.8"
C	Wheel Base	980 mm	3'-2.6"
D	Ground Clearance	204 mm	8.03"
E	Roll Back Angle		30°
F	Departure Angle		27°
G	Over All Height	1970 mm	6'-5.5"
H	Dump Height @ 40°	2160 mm	7'-1"
I	Load Over Height	2646 mm	8'-8.2"
J	Pin Height	2813 mm	9'-2.7"
K	Dump Angle		42°
L	Dump Reach	588 mm	1'-11"
M	Max Reach at Full Height	910 mm	2'-11.8"
N	Track Width with spec tyre	1245 mm	4'-1"
O	Bucket Width	1580 mm	5'-2.2"
P	Width Over Tyres-Standard	1500 mm	4'-11"
Turning Radius			
	Bucket	2039 mm	6'-8.2"
	Tyre	1125 mm	3'- 8.3"
	Rear Chassis	1426 mm	4'-8.1"

\* All Specifications Are Subjected To Change By Bull Without Prior Notice.

New Class of Backhoe Loader **SMART KID**

DIMENSION



	Backhoe Dimensions	mm	ft-in
A	SAE Maximum dig depth	2558mm	8'-4.7"
B	SAE Reach - ground level to rear wheel centre	4393mm	14'4.9"
C	SAE Reach - ground level to slew centre	3443mm	11'- 3.5"
D	SAE Reach - at full height to slew centre	1970mm	6'- 5.5"
F	SAE Maximum working height	3415mm	11'- 2.4"
G	SAE Maximum loadover height	2370mm	7'- 9.3"
J	SAE Bucket rotation	203°	
	Standard Bucket width	460mm	1'- 6.1"
	Standard Bucket capacity	0.06m³	
	Bucket tearout	2368Kgf	
	Dipper tearout	1512Kgf	

	Loader Dimensions	mm	ft-in
M	Dump height	2152mm	7'-0.72"
N	Loadover height	2608mm	8'-6.6"
O	Pin height	2821mm	9'-3.0"
P	Reach at ground (toe plate horizontal)	985mm	3'-2.7"
Q	Max reach at full height	1032mm	3'-4.6"
R	Reach at full height - fully dumped	688mm	2'-3.0"
S	Dig depth (toe plate horizontal) clearance	70mm	0ft-2.7"
T	Rollback at ground		42°
U	SAE Dump angle		43°
	Bucket width	1580 mm	5'- 2.2"
	Bucket capacity		0.32m³
	Max. bucket breakout force		2933 Kgf
	Max. loading arm breakout force		2410 Kgf
	Rated operating capacity		640Kgf

JOYSTICK DRIVE

SPECIFICATION

Engine		Capacity		Tyres	
Engine	KUBOTA: 4 Cylinder Water cooler, Naturally aspirated	Hydraulic System Incl. Tank	57 ltr	Standard	10x16.5-10 PR
Power	49.5 HP / 2700 RPM	Fuel Tank	40 ltr	Optional	Solid Tyre 7 x 15
Max Torque	158.6 Nm @1600RPM	Chain Cases	20 ltr		
		Engine Coolant	8.4 ltr		
		Engine Oil	9.5 ltr		
Hydraulic System		Electrical		Transmission	
Auxiliary Pump Capacity	56.7 lpm @2700 rpm	Battery	12V / 88 Ah	Transmission type	Hydrostatic Drive
Auxiliary Pump Pressure	230 bar			Max speed	14 Km/hr
Main Pump Capacity	49 cc + 49 cc				
Main Pump PressureFilter	270 bar				



**CH 76**  
CHALLENGER

**SD 76**  
CHAMPION

**SD 76**  
SUPER SMART

**HD 96**

**HD 100**

**GRANDIA**



NOW IN **63+**  
COUNTRIES  
150+ SERVICE CENTRES



**BULL MACHINES PVT.LTD,**  
SF.NO. 5/1A, L&T By Pass junction,  
Trichy Road, Coimbatore - 641 103, INDIA.  
☎ : +91 98426 70184  
✉ : Info@bullmachine.com



From : 49HP TO 100 HP