



**FEARLESS MACHINE  
TO CONQUER ANY TERRAIN**



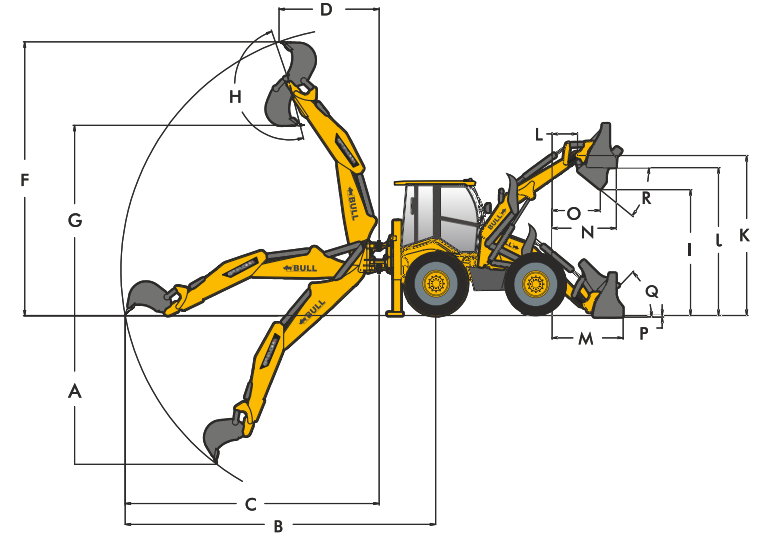
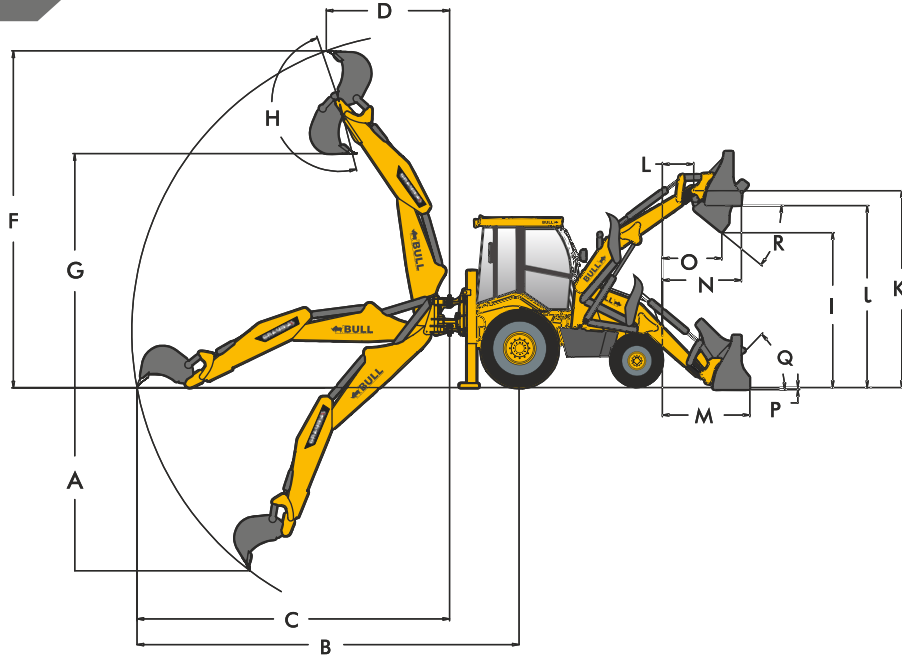
### HD 96

### HD 100

### HD 100

### GRANDIA

ENGINE	Kilroskar 4R1040T, Non-Emission Diesel Engine (4160 CC) Gross Power : <b>70.6 kW (96 HP) @ 2200 RPM</b> Gross Torque : <b>377 Nm @ 1400 RPM</b>			PERKINS 1104D-44TA, EU NRMM 97/68/ EC EURO III A Diesel Engine (4400CC) Gross Power: <b>74.5 kW (100HP) at 2200 RPM</b> Gross Torque: <b>410Nm@1400 RPM</b>			PERKINS 1104D-44TA, EU NRMM 97/68/ EC EURO III A Diesel Engine (4400CC) Gross Power: <b>74.5 kW (100HP) at 2200 RPM</b> Gross Torque: <b>410Nm@1400 RPM</b>			PERKINS 1104D-44TA, EU NRMM 97/68/ EC EURO III A Diesel Engine (4400CC) Gross Power: <b>74.5 kW (100HP) at 2200 RPM</b> Gross Torque: <b>410Nm@1400 RPM</b>		
TRANSMISSION	<b>CARRARO</b> Synchro - Shuttle Transmission with integral torque converter			<b>CARRARO</b> Synchro - Shuttle Transmission with integral torque converter			<b>CARRARO SPS</b> Power Shift Transmission with integral torque converter			<b>CARRARO AUTOMATIC</b> Transmission (Manual And Auto Mode) With Integral Torque Converter		
STEERING	Two Wheel Power Steering			Two Wheel Power Steering			Two Wheel Power Steering			Four Wheel Power Steering with 3 Modes (Circular Mode, Crab Mode & Two wheel steer Mode)		
ELECTRICALS	12V Battery System (180Ah)			12V Battery System (180Ah)			12V Battery System (180Ah)			12V Battery System (180Ah)		
TYRES	<b>FRONT 4WD</b> : 12.5/80X18 - 12PR Optional : 16/70 - 20 (400/70 - 20) - 16PR <b>REAR</b> Industrial (Standard) : 16.9X28 - 12PR Optional : 19.5LX24 - 12PR Heavy Duty : 14X25 - 20PR			<b>FRONT 4WD</b> : 12.5/80X18 - 12PR Optional : 16/70 - 20 (400/70 - 20) - 16PR <b>REAR</b> Industrial (Standard) : 16.9X28 - 12PR Optional : 19.5LX24 - 12PR Heavy Duty : 14X25 - 20PR			<b>FRONT 4WD</b> : 12.5/80X18 - 12PR Optional : 16/70 - 20 (400/70 - 20) - 16PR <b>REAR</b> Industrial (Standard) : 16.9X28 - 12PR Optional : 19.5LX24 - 12PR Heavy Duty : 14X25 - 20PR			<b>FRONT</b> : 16.9X28 - 12PR <b>REAR</b> : 16.9X28 - 12PR		
SPEED	Forward Max : <b>40 Km/Hr</b> Reverse Max : <b>20.3 Km/Hr</b> (3 <sup>rd</sup> Gear Recommended)			Forward Max : <b>41 Km/Hr</b> Reverse Max : <b>20.3 Km/Hr</b> (3 <sup>rd</sup> Gear Recommended)			Forward Max : <b>38.8 Km/Hr</b> Reverse Max : <b>20.3 Km/Hr</b> (3 <sup>rd</sup> Gear Recommended)			Forward Max : <b>36Km/Hr</b> Reverse Max : <b>18Km/Hr</b> (3 <sup>rd</sup> Gear Recommended)		
HYDRAULICS	Hydraulics : <b>3335 p.s.i(230 bar)</b> Pump flow : <b>145 LPM @ 2200 RPM</b> Pump Type : <b>GEAR PUMP</b>			Hydraulics : <b>3335 p.s.i(230 bar)</b> Pump flow : <b>145 LPM @ 2200 RPM</b> Pump Type : <b>GEAR PUMP</b>			Hydraulics : <b>3335 p.s.i(240 bar)</b> Pump flow : <b>145 LPM @ 2200 RPM</b> Pump Type : <b>GEAR PUMP</b>			Hydraulics : <b>3335 p.s.i(230 bar)</b> <b>3480 p.s.i(240bar Optional)</b> Pump Flow : <b>145 LPM @ 2200 RPM</b> Pump Type : <b>GEAR PUMP(OPTION: PISTON PUMP)</b>		
WEIGHT	<b>9200 Kgs</b>			<b>9300 Kgs</b>			<b>9300 Kgs</b>			<b>9700 Kgs</b>		
SERVICE CAPACITIES		<i>System</i>	<i>Service</i>		<i>System</i>	<i>Service</i>		<i>System</i>	<i>Service</i>		<i>System</i>	<i>Service</i>
	Hydraulic Tank	120 Ltr	100 Ltr	Hydraulic Tank	120 Ltr	100 Ltr	Hydraulic Tank	120 Ltr	100 Ltr	Hydraulic Tank	120 Ltr	100 Ltr
Fuel Tank	115 Ltr	115 Ltr	Fuel Tank	115 Ltr	115 Ltr	Fuel Tank	115 Ltr	115 Ltr	Fuel Tank	115 Ltr	115 Ltr	
Engine Coolant	17 Ltr	15 Ltr	Engine Coolant	17 Ltr	15 Ltr	Engine Coolant	17 Ltr	15 Ltr	Engine Coolant	17 Ltr	15 Ltr	
Engine Oil	13 Ltr	13 Ltr	Engine Oil	13 Ltr	13 Ltr	Engine Oil	13 Ltr	13 Ltr	Engine Oil	13 Ltr	13 Ltr	
Transmission	19.5Ltr	13 Ltr	Transmission	19.5Ltr	13 Ltr	Transmission	19.5Ltr	13 Ltr	Transmission	19.5 Ltr	13 Ltr	
Rear Axle	17 Ltr	17 Ltr	Rear Axle	17 Ltr	17 Ltr	Rear Axle	17 Ltr	17 Ltr	Rear Axle	16 Ltr	16 Ltr	
4WD Front Axle	10 Ltr	10 Ltr	4WD Front Axle	10 Ltr	10 Ltr	4WD Front Axle	10 Ltr	10 Ltr	4WD Front Axle	11.2 Ltr	11.2 Ltr	
OPTIONS	Ditch Cleaning Bucket   Square Hole Bucket   Rock breaker   Ripper tooth   Trench bucket   Taper Ditching bucket   Multipurpose 6 in I bucket   Telescopic Dipper   G.P Bucket											



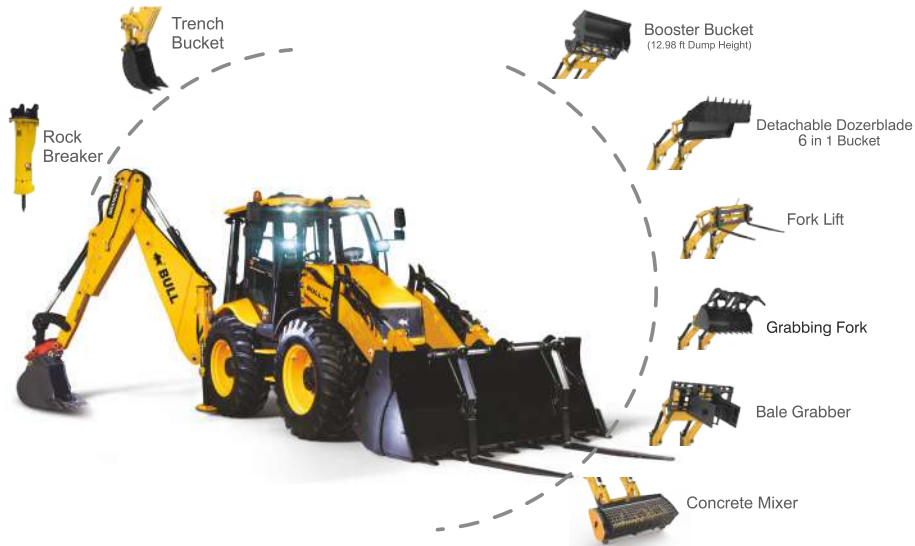
EXCAVATOR PERFORMANCE	HD96		HD100		HD 100		GRANDIA	
	Retraction STD	Telescopic Dipper (option)	Retraction STD	Telescopic Dipper (option)	Retraction STD	Telescopic Dipper (option)	Retraction STD	Telescopic Dipper (option)
Standard GP Bucket Capacity	0.22 cu.m		0.22 cu.m		0.22 cu.m		0.22 cu.m	
A Maximum DIG depth	4.60 m	5.60 m	4.60 m	5.60 m	4.60 m	5.60 m	4.77 m	5.83 m
B Reach Ground Level to Rear wheel center	6.81 m	7.91 m	6.81 m	7.91 m	6.81 m	7.91 m	6.77 m	7.8 m
C Reach at Ground level to slew center	5.50 m	6.60 m	5.50 m	6.60 m	5.50 m	6.60 m	5.47 m	6.5 m
D Reach at full height to slew center	2.85 m	3.56 m	2.85 m	3.56 m	2.85 m	3.56 m	2.82 m	3.61 m
F Maximum working height	6.08 m	6.77 m	6.08 m	6.77 m	6.08 m	6.77 m	5.98 m	6.89 m
G Maximum Load over Height	4.38 m	5.02 m	4.38 m	5.02 m	4.38 m	5.02 m	4.19 m	5.19 m
H Bucket Rotation power	188°		188°		188°		201°	
Bucket Tear out force	6851 Kgf		6851 Kgf		6851 Kgf		6320kgf	
Dipper Tear out force	3316 Kgf		3316 Kgf		3316 Kgf		3580kgf	
Lift Capacity to bucket pivot at full reach (without bucket fitted)	1400 Kgs		1400 Kgs		1400 Kgs		1642 kgs	

LOADER PERFORMANCE	HD96	HD100	HD 100	GRANDIA
Standard GP Bucket Capacity	1.26 cu.m	1.26 cu.m	1.26 cu.m	1.26 cu.m
I Dump Height	2.96 m	2.96 m	2.96 m	2.96 m
J Load Over Height	3.39 m	3.39 m	3.39 m	3.39 m
K Pin Height	3.61 m	3.61 m	3.61 m	3.61 m
L Pin Forward Reach	0.42 m	0.42 m	0.42 m	0.54 m
M Reach at Ground	1.60 m	1.60 m	1.60 m	1.75 m
N Reach at full height	1.42 m	1.42 m	1.42 m	1.44 m
O Reach at full Height bkt Dumping	1.1 m	1.1 m	1.1 m	1.17 m
P Below ground level DIG Depth	0.08 m	0.08 m	0.08 m	0.16 m
Q Roll back at Ground	50°	50°	50°	50°
R Dump Angle	45°	45°	45°	45°
Bucket Break-out Force	8793 Kgf	8793 Kgf	8793 Kgf	8793kgf
Loader Arm Break-out Force	5642 Kgf	5642 Kgf	5642 Kgf	5642kgf
Pay Load	2000 Kgf	2000 Kgf	2000 Kgf	2000kgf
Lifting capacity at loader arm hook pin	3600kgf	3600kgf	3600kgf	3600kgf

### WORLD'S BEST COMPONENTS



## MULTIPLE LOADER BUCKET OPTIONS



## SALIENT FEATURES

All machines come with advanced features that enhance their performance, productivity and reliability to the highest level



More Bucket Breakout Force & Backhoe Bucket Capacity



Heavy Weight Champion



Most fuel efficient backhoe in the world in its class\*



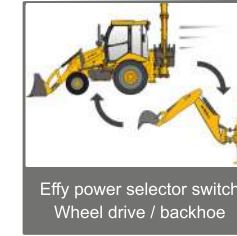
The Tallest Dumping Backhoe Loader in the World



Optional Quick Hitch



Powder Coating : Scratch Resistant Painting



Effy power selector switch Wheel drive / backhoe



Better Weight Distribution Effy Power Drive System

## EASY TO MAINTAIN AT LOW COST

An Operator friendly machine that facilitates and alerts the operator for regular maintenance.



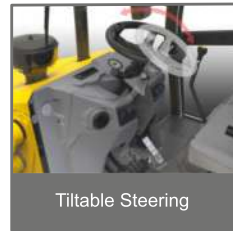
Front Opening Bonnet



Single layer Radiator/ Cooler: Easy to clean

## WORLD CLASS CABIN COMFORT

Incorporated with features for the practical needs of the operator for uninterrupted fatigue free working for longer hours.



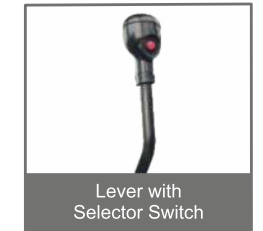
Tiltable Steering



Forward Reverse Switch



Air Vents Front side, Left side, Right side and Rear side Air Condition (optional) - Uniform Airflow



Lever with Selector Switch

## Our other range of products



**BULL MACHINES PVT.LTD,**  
Trichy Road, Coimbatore. INDIA  
 +91 98422 87770  
 sales@bullmachine.com  
 exports@bullmachine.com

Dealer

