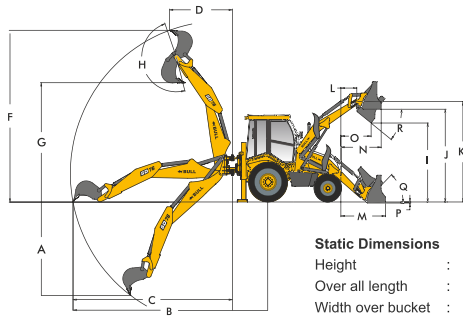


*WORLD'S BEST
SUPER SMART*



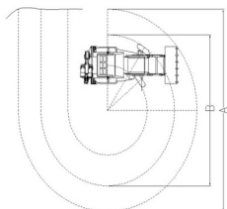
EX+



Static Dimensions
 Height : 3.56m
 Over all length : 7.40m
 Width over bucket : 2.35m

LOADER PERFORMANCE	SD 76	
	with link bracket	without link bracket
Standard GP Bucket Capacity	1.26 cu.m	
I Dump Height	2.96 m	2.96 m
J Load Over Height	3.39 m	3.39 m
K Pin Height	3.61 m	3.61 m
L Pin Forward Reach	0.42 m	0.42 m
M Reach at Ground	1.60 m	1.47 m
N Reach at full height	1.42 m	1.28 m
O Reach at full Height bkt Dumping	1.1 m	0.89 m
P Below ground level DIG Depth	0.08 m	0.1 m
Q Roll back at Ground	50°	49°
R Dump Angle	45°	45°
Bucket Break-out Force	8183 kgf	
Loader Arm Break-out Force	5315 kgf	
Pay Load	2400 kgf	
Lifting Capacity At Loader Arm Hook Pin	2600 kgf	

EXCAVATOR PERFORMANCE	SD 76 STANDARD	
	0.26 cu.m	
A Maximum DIG depth	4.77 m	15 ft-7.
B Reach Ground Level to Rear wheel center	6.77 m	22 ft-2.5
C Reach at Ground level to slew center	5.47 m	17 ft-11.
D Reach at full height to slew center	2.82 m	9 ft-3.
F Maximum working height	5.98 m	19 ft-7.
G Maximum Load over Height	4.19 m	13 ft-9.
H Bucket Rotation angle	204°	
Bucket Tear out force	5936 kgf	
Dipper Tear out force	3109 kgf	



TURNING CIRCLE		SD 76
Inner wheels braked		
A Loader bucket outside	9.18	
B Wheel outside	6.37	
Inner wheels not braked		
A Loader bucket outside	11.56	
B Wheel outside	8.76	
DIESEL TANK CAPACITY		SD 76
Fuel Tank	115Ltr	

ENGINE

Kirloskar 4R1190NA, BS-IV (CEV)
 Diesel Engine (4760 CC)
 Gross Power
74.5HP (54.8kW) @ 2200 rpm
 Gross Torque
 300Nm @ 1300 rpm

TRANSMISSION

CARRARO
 Synchro-shuttle Transmission with
 integral torque convertor (Ratio : 2.64)

HYDRAULICS

SUPER SMART

Pump type Load Sensing
 Variable Piston Pump
 Pressure 3335 p.s.i (230 bar)
 Pump Flow 119 lpm @ 2200 rpm
 128 lpm @ high rpm

TYRES

FRONT 2WD 9.00X16 - 16PR
 4WD 12.5/80X18 - 12PR
REAR Industrial : 16.9X28 - 12PR
 Heavy Duty : 14X25 - 20PR

DRIVE

2 Wheel Drive & 4 Wheel Drive
 Options available.

STEERING

Power Steering

ELECTRICAL

12V Battery Systems (150Ah)

SPEED

Forward Max : 39 Km/Hr
 Reverse Max : 9.3 Km/Hr (2nd Gear)

WEIGHT

8010 Kgs

BACKHOE BUCKET OPTIONS

Excavator Standard bucket : 0.26 cu.m



42+ Types of Interchangeable BUCKET ATTACHMENTS

MORE ADAPTABLE / SEGMENT / EARNING



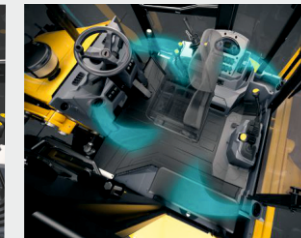
WHEN PERFORMANCE MEETS FLEXIBILITY
THE ALL ROUNDER MACHINE



WORLD CLASS COMFORT



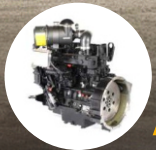
Adjustable Steering
Customizable steering for effortless operation of the backhoe loader.



Air Conditioner
Heavy Duty RedDOT (USA) make with multi directional air flow climatic control.(optional)



ROPS & FOPS
Roll over & Fall over protection BULL cabin protects the operator from rollover or falling object.



Proven Kirloskar Engine
CRDi POWER
FUEL EFFICIENCY
+
BULL APM

Optimized Automatic Power Management for synergizing engine and hydraulics power



Parker Piston Pump (U.S.A)



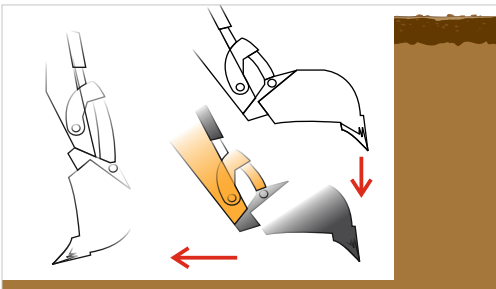
Carraro Synchro-shuttle Transmission (Italy)



SBS Tech : Side-By-Side Radiator for Increased Efficiency

UNIQUE FEATURE

SQUARE CUT 90° FOUNDATION BUCKET



- ▶ Specifically designed for precise square cuts in civil foundation pits and water tank, septic tank, trenches – against the popular demand of civil engineers.
- ▶ Foundation bucket - World's best cutting angle for perfect finishing of pits / tank at 90°.
- ▶ Eliminates the manual trimming, enhancing safety.

Perfect square cut by **SUPER SMART**





SMART KID



SKID STEER
AV 490



NOW IN **64+**
COUNTRIES



HD100



SD76
LOADER



HD96



SD76
CHAMPION



HD76
CRUSHER KING



GH76
CHALLENGER



HD76



SD76
SUPER SMART



 **RAPID
SERVICE & SPARES
88832 88832**

LIVE **INFOMATIC**

78+
Dealers
across India
& Growing

PRIDE OF
INDIA 



BULL MACHINES PVT.LTD,
SF.NO. 5/1A, L&T By Pass junction,
Trichy Road, Coimbatore - 641 103.
INDIA.

Sales
☎ : +91 98422 87770
✉ : sales@bullmachine.com

Service and Spares
☎ : 88832 88832
✉ : care@bullmachine.com

International sales
✉ : exports@bullmachine.com

Dealer: